

REV.	DESCRIPTION	DATE	BY
-	-	-	-

GENERAL NOTES:

Proposed new works

LEGEND (Use Classes)

A3

F1

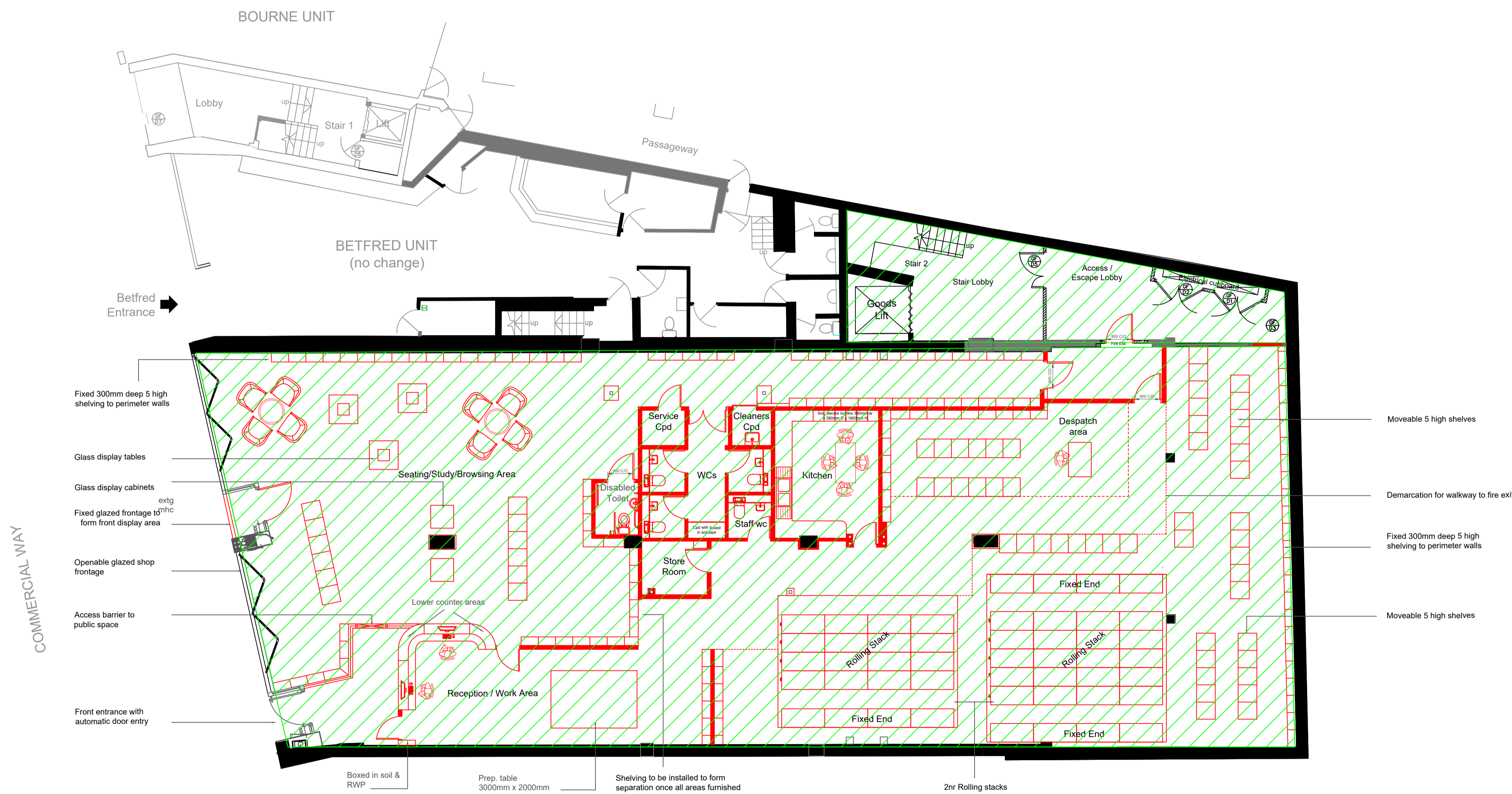
AREA SCHEDULE –PROPOSED

F1 USE

GROUND FLOOR 557 sq.m.

FIRST FLOOR 204 sq.m.

TOTAL A3 RESTAURANT USE 761 sq.m.

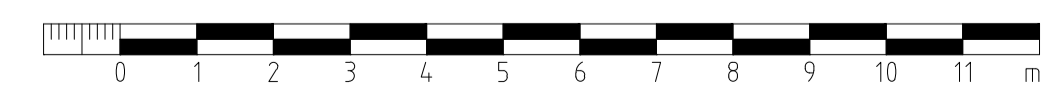


- Moveable 5 high shelves
- Demarcation for walkway to fire exit
- Fixed 300mm deep 5 high shelving to perimeter walls
- Moveable 5 high shelves

- Fixed 300mm deep 5 high shelving to perimeter walls
- Glass display tables
- Glass display cabinets
- Fixed glazed frontage to form front display area
- Openable glazed shop frontage
- Access barrier to public space
- Front entrance with automatic door entry

Boxed in soil & RWP  
Prep. table 3000mm x 2000mm  
Shelving to be installed to form separation once all areas furnished  
2hr Rolling stacks

Proposed Ground Floor



CIVIC OFFICES, GLOUCESTER SQUARE  
WOKING, SURREY, GU21 6YL  
TEL : 01483 743845 FAX :01483 723580



STATUS  
**PLANNING**

Surrey Performing Arts Library

PROJECT DESCRIPTION  
Refurbishment of Morris House - Units 1 & 2  
DRAWING TITLE  
Proposed ground floor layout

DRAWN BY: MF	CHECKED BY: -	DATE: 04.12.20
SCALE: 1:100 @ A1	CAD FILE REF: Planning Drawings	VALUER'S REF.:
CAD FOLDER REF.:		

PROPERTY REF.  
34 Commercial Way, Morris House

DRAWING No.  
712-P003